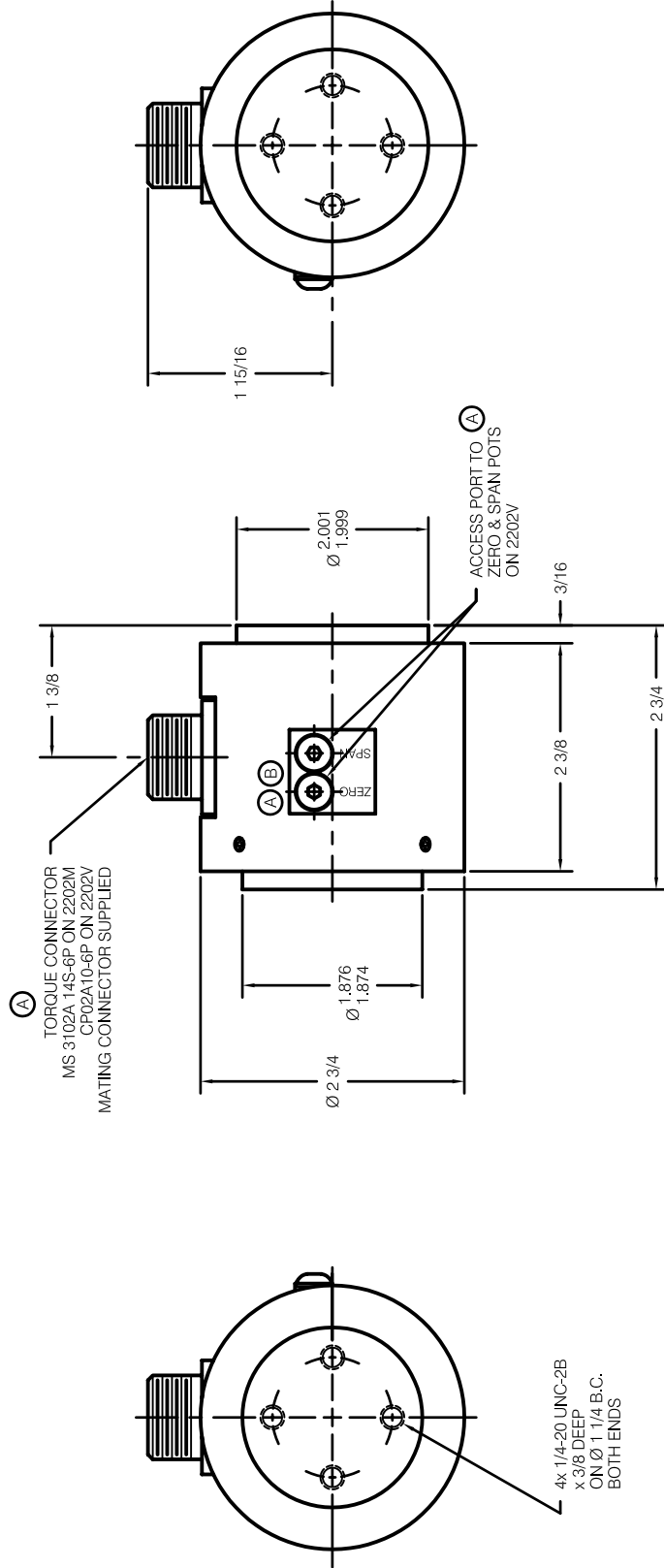


INFORMATION CONTAINED HEREIN IS CONSIDERED PROPRIETARY TO S. HIMMELSTEIN AND COMPANY. IT IS RELEASED ONLY FOR THE PURPOSES OF THE EQUIPMENT OR COMPONENTS THEREOF DESCRIBED HEREIN UNDER NO CIRCUMSTANCES SHALL THE INFORMATION CONTAINED HEREIN BE REPRODUCED, COPIED, OR TRANSMITTED IN ANY FORM OR BY ANY MEANS, WITHOUT THE EXPRESS WRITTEN CONSENT OF S. HIMMELSTEIN AND COMPANY.



PLOTTED: 08/17/2007 @ 07:39, ENG REF ONLY: 48114.DWG, GBD123

S. HIMMELSTEIN & Co. OUTLINE RTM 2202M RTM 2202V (A)		MATERIAL:	
		FINISH:	
DRAWN: <i>Sevada Bhatnag</i> CHECKED: <i>Allen J. Jacobs</i> ENGINEER:		DATE: 06/07/2005 DATE: 06/08/2005 DATE:	SCALE: 1:1 SHEET 1 OF 1 REV B
DEBURR & BREAK SHARP EDGES UNLESS OTHERWISE SPECIFIED DIMENSIONS ARE IN INCHES		SURFACE FINISH: 7	
TOLERANCES ON FRACTIONS: DECIMALS: ANGLES:		REVISIONS	
B REVISED POT ACCESS, AMP REDESIGN 08/17/2007 AJ/JGB		DATE APP	
A ADDED: 2202V IN TITLE BLOCK, 2202V TORQUE CONNECTOR & ACCESS PORT 10/05/2005 AJ/JGB		DATE APP	
SYM DESCRIPTION		REVISIONS	