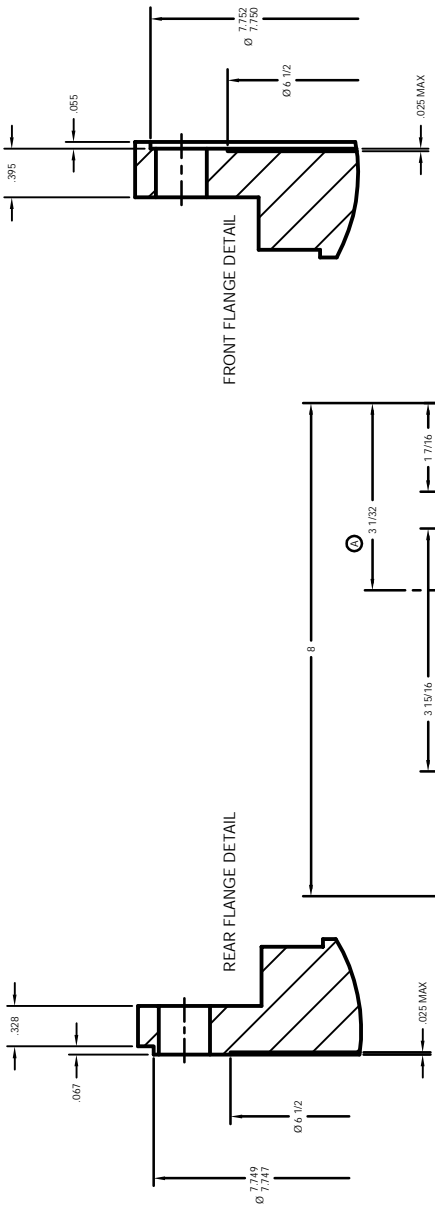


REVISIONS

SYM	DESCRIPTION	DATE	APPR
A	CHANGED TORQUE CONNECTOR SIZE & DIMS AS SHOWN	06/07/2002	PC/GB
B	ADDED SPEED PICKUP HEIGHTS, NO ECN	06/07/2008	AJ/GB



FRONT FLANGE DETAIL

REAR FLANGE DETAIL

OPTIONAL SPEED PICKUP MATING CONNECTOR SUPPLIED (MS 3106A 10SL-4S STD TYPE, CODE 'A') (MS 3106A 10SL-3S ZERO VELOCITY TYPE, CODE 'Z')

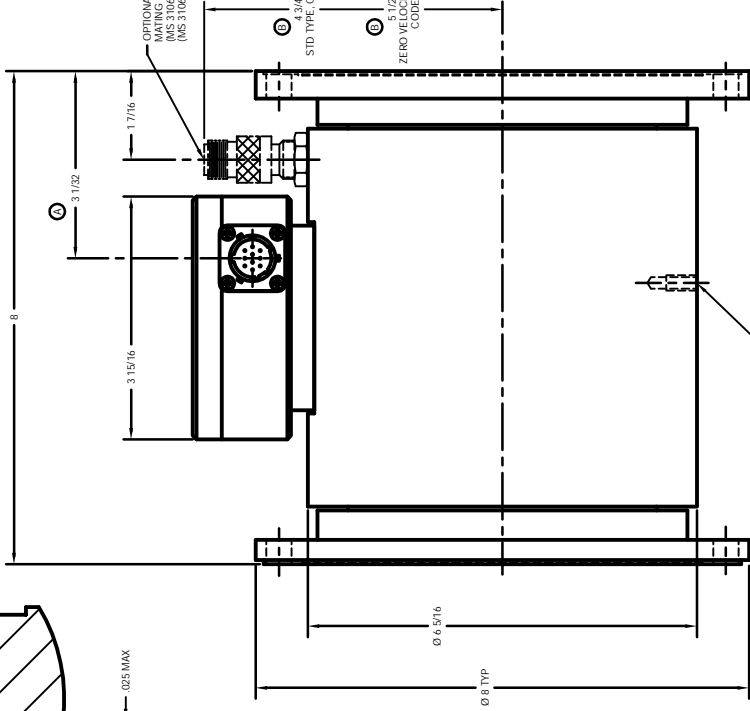
KPT02E 12-TOP CONNECTOR MATING CONNECTOR SUPPLIED (KPT06F 12-10S)

3/8" FOR COVER REMOVAL

3/32

4.1716

6.0, 6.977, 6.951, 6.925 EQUALLY SPACED ON Ø 7.250 ±.002 B.C.



14-20 UNC-2Bx.388 DEEP FOR RESTRAINING STRAP

Ø 4.314 STD TYPE, CODE 'A'

Ø 0.875 ZERO VELOCITY TYPE, CODE 'Z'

DEBURK & BRAK SHARP EDGES

TOLERANCES	DIMENSIONS	ANGLES	SURFACE FINISH	MATERIAL	HEAT TREAT	FINISH
...

DESIGNER'S NOTE OF DRAWING

DESIGNER	DATE
Garfield Ehrlich	06/07/2002
Allen J. Jiles	06/07/2002

DO NOT SCALE DIMS

S. HIMMELSTEIN & Co.

OUTLINE
79070V
TORQUEMETER

8828	D	S-8844	B
SCALE	1:1	SHEET	3 OF 1
		REV	

THIS DRAWING IS THE PROPERTY OF S. HIMMELSTEIN & COMPANY. IT IS TO BE USED ONLY FOR THE PROJECT AND QUANTITY SPECIFIED. IT IS NOT TO BE REPRODUCED, COPIED, OR TRANSMITTED IN ANY FORM OR BY ANY MEANS, ELECTRONIC OR MECHANICAL, INCLUDING PHOTOCOPYING, RECORDING, OR BY ANY INFORMATION STORAGE AND RETRIEVAL SYSTEM, WITHOUT THE WRITTEN PERMISSION OF S. HIMMELSTEIN & COMPANY.