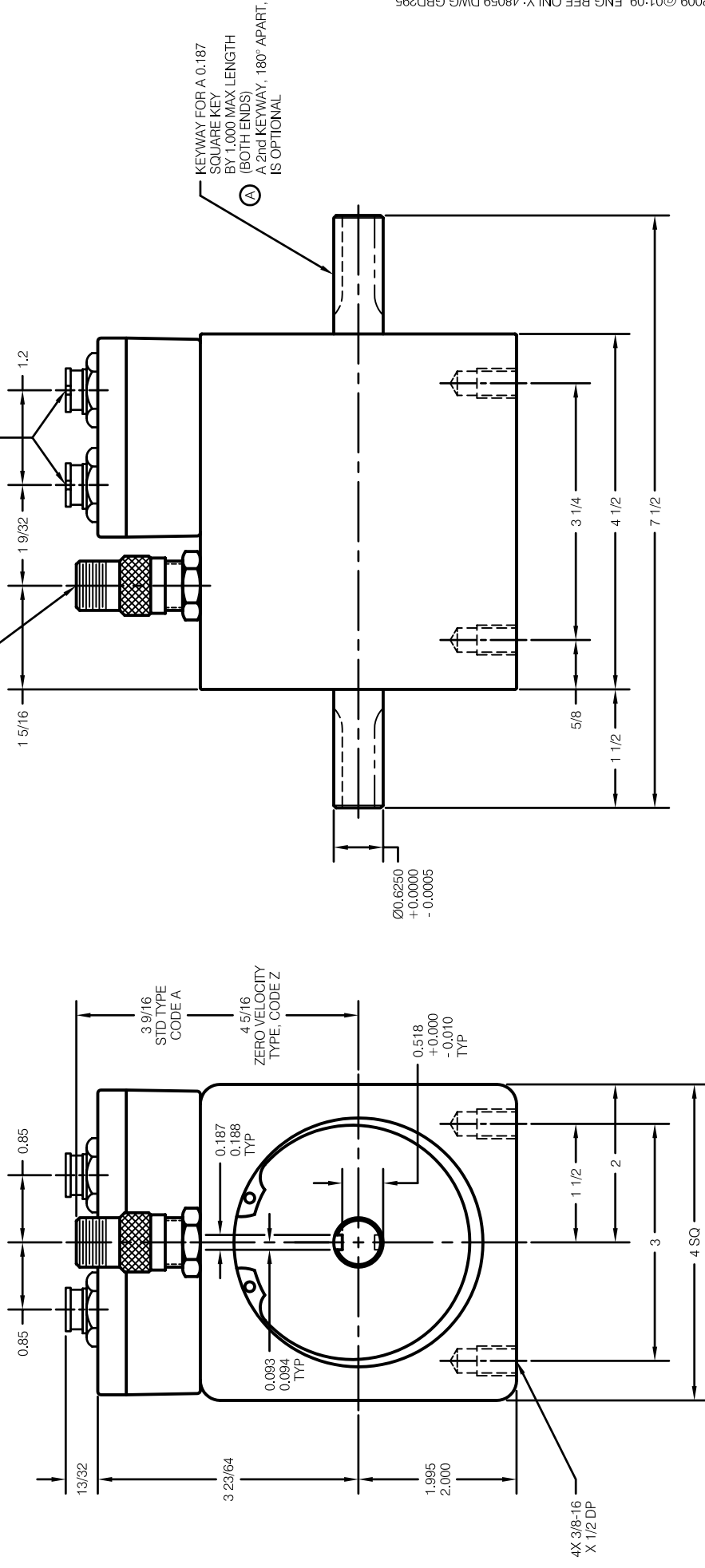


INFORMATION CONTAINED HEREIN IS CONSIDERED PROPRIETARY TO S. HIMMELSTEIN AND COMPANY. IT IS RELEASED ONLY FOR USE IN CONNECTION WITH THE EQUIPMENT OR COMPONENTS THEREOF DESCRIBED HEREIN UNDER NO CIRCUMSTANCES SHALL THIS INFORMATION BE REPRODUCED OR TRANSMITTED IN ANY FORM OR BY ANY MEANS, ELECTRONIC OR MECHANICAL, INCLUDING PHOTOCOPYING, RECORDING, OR BY ANY INFORMATION STORAGE AND RETRIEVAL SYSTEM, WITHOUT THE WRITTEN CONSENT OF S. HIMMELSTEIN AND COMPANY.

OPTIONAL SPEED PICKUP MATING CONNECTORS SUPPLIED (MS 3106A 10SL-4S STD TYPE, CODE A)
 3X MINI-CON-X® CONNECTORS FOR TORQUE, RS232C, AND POWER MATING CONNECTORS SUPPLIED SEE 224-8244 FOR DETAILS



SYMBOL		DESCRIPTION		DATE		APP. SYM.		DESCRIPTION		DATE		APP.	
		A		07/23/2009		A/JCB		ADDED OPTIONAL 2nd KEYWAY NOTE, NO ECH					
SYMBOL		DESCRIPTION		DATE		APP. SYM.		DESCRIPTION		DATE		APP.	
		A		07/23/2009		A/JCB		ADDED OPTIONAL 2nd KEYWAY NOTE, NO ECH					
DEBURR & BREAK SHARP EDGES UNLESS OTHERWISE SPECIFIED DIMENSIONS ARE IN INCHES										SURFACE FINISH		63 7	
TOLERANCES ON FRACTIONS: ±1/32										DECIMALS: ±0.010		ANGLES: ±1°	
MATERIAL:										DRAWN		DATE	
FINISH:										Allen J. Jacks		07/10/06	
CHECKED										Allen J. Jacks		08/12/2006	
ENGINEER										Allen J. Jacks		07/10/04	
SCALE: FULL										SHEET 1		OF 1	
S. HIMMELSTEIN & Co.										OUTLINE		48201V	
SIZE										C		224-8059	
REV										A			