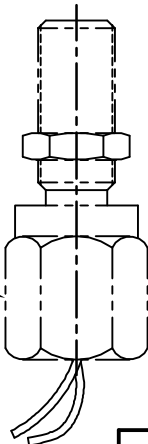
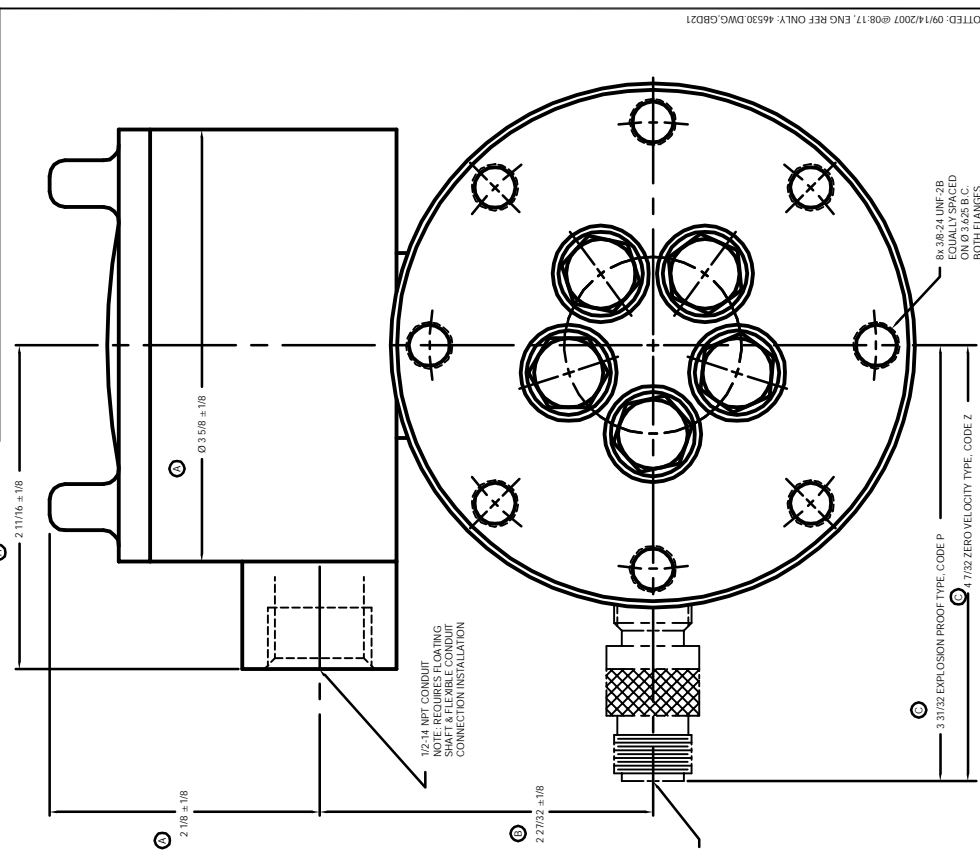
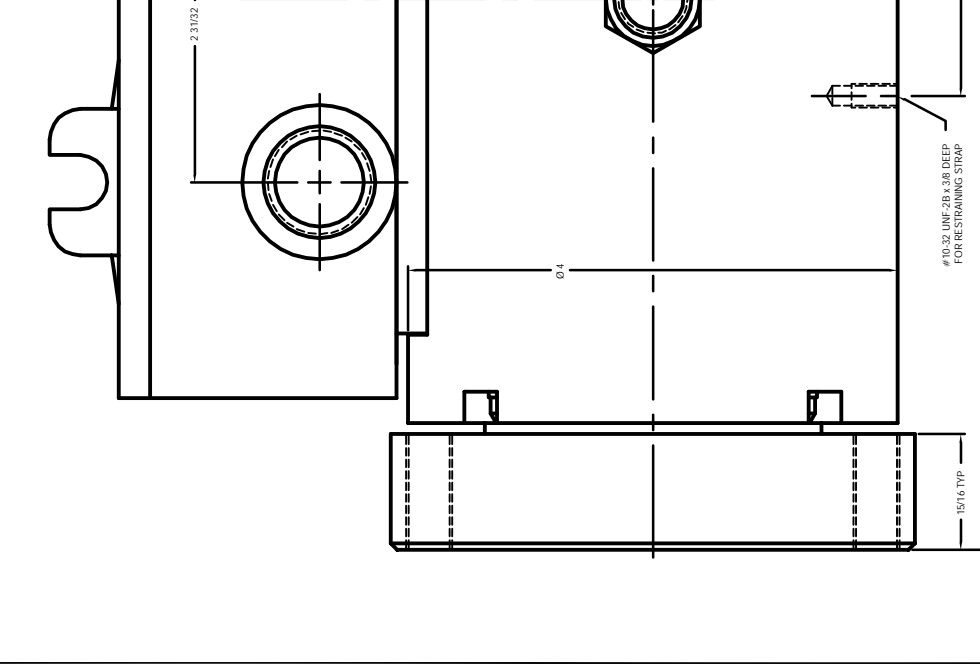


INFORMATION CONTAINED HEREIN IS CONSIDERED PROPRIETARY TO S. HIMMELSTEIN & CO. ANY REPRODUCTION OR TRANSMISSION OF THIS INFORMATION IN ANY FORM OR BY ANY MEANS, ELECTRONIC OR MECHANICAL, INCLUDING PHOTOCOPYING, RECORDING, OR BY ANY INFORMATION STORAGE AND RETRIEVAL SYSTEM, WITHOUT THE WRITTEN PERMISSION OF S. HIMMELSTEIN & CO. IS PROHIBITED.

REVISIONS			
SYM	DESCRIPTION	DATE	APPR
A	224-6530 2 1/16" x 1/8" 2 7/8" x 1/8" & 3 5/8" x 1/8" WERE REDESIGNED FOR THE NEW 10.32 UNF-3B TORQUE TRANSMITTER. ALL DIMENSIONS ARE NEW UNLESS OTHERWISE SPECIFIED.	07/11/1984	AJ/CB
B	2 27/32 WAS 2 23/32. DESIGN CHANGE. NO ECN.	04/26/1987	AJ/CB
C	SPEED PICKUP HEIGHTS WERE 3/16 FOR BOTH. NO ECN.	08/14/2007	AJ/CB



OPTIONAL EXPLOSION PROOF PICK UP
NOTE: REQUIRES FLOATING SHAFT & FLEXIBLE
CONDUIT CONNECTION INSTALLATION



DESIGNER		DATE	
THOMAS	08/07/1988	THOMAS	08/07/1988
CHIEF	08/07/1988	CHIEF	08/07/1988
ENGINEER	08/07/1988	ENGINEER	08/07/1988
TOLERANCES UNLESS OTHERWISE SPECIFIED		TOLERANCES UNLESS OTHERWISE SPECIFIED	
FRACTIONS	DECIMALS	ANGLES	DECIMALS
3/16	.1875	1°	.001
SURFACE FINISH		SURFACE FINISH	
MATERIAL		MATERIAL	
HEAT TREAT		HEAT TREAT	
FINISH		FINISH	

S. HIMMELSTEIN & Co.
OUTLINE
39061X, 39061X
TORQUE TRANSMITTER

SCALE: 2:1
SHEET 1 OF 1
REV