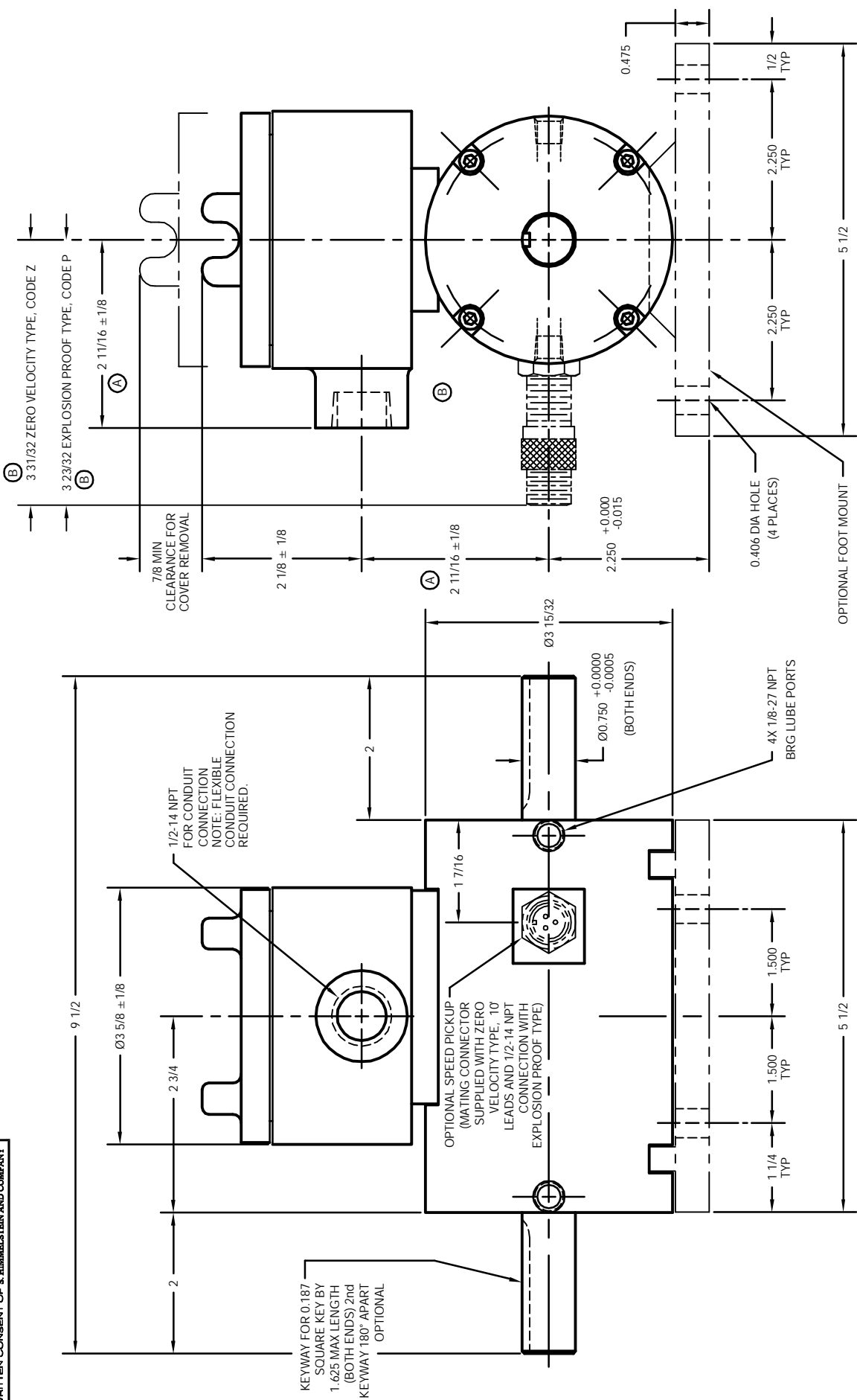


INFORMATION CONTAINED HEREIN IS CONSIDERED PROPRIETARY TO S. HIMMELSTEIN AND COMPANY. IT IS RELEASED ONLY FOR USE IN CONNECTION WITH THE FABRICATION, ASSEMBLY, OPERATION, MAINTENANCE, REPAIR, OR DISPOSAL OF THE EQUIPMENT DESCRIBED HEREIN. UNDER NO CIRCUMSTANCES SHALL THE INFORMATION CONTAINED HEREIN BE REPRODUCED OR TRANSMITTED IN ANY FORM OR BY ANY MEANS FOR ANY OTHER REASON WITHOUT THE EXPRESS WRITTEN CONSENT OF S. HIMMELSTEIN AND COMPANY.



KEYWAY FOR 0.187
 SQUARE KEY BY
 1.625 MAX LENGTH
 (BOTH ENDS) 2nd
 KEYWAY 180° APART
 OPTIONAL

OPTIONAL SPEED PICKUP
 (MATING CONNECTOR
 SUPPLIED WITH ZERO
 VELOCITY TYPE, 10°
 LEADS AND 1/2-14 NPT
 CONNECTION WITH
 EXPLOSION PROOF TYPE)

PLOTTED: 06/14/2006 @01:01, ENG REF ONLY: 47114.DWG.GBD48

										S. HIMMELSTEIN & Co. OUTLINE 3902X, 39002X TORQUE TRANSMITTER	
										SCALE: 1:1 SHEET 1 OF 1 REV	
										MATERIAL: ... FINISH: ... DATE: 10/31/96 DRAWN: Allen J. Jacks CHECKED: Gerald Babicz ENGINEER:	
										DEBURR & BREAK SHARP EDGES UNLESS OTHERWISE SPECIFIED DIMENSIONS ARE IN INCHES TOLERANCES ON FRACTIONS: ... DECIMALS: ... ANGLES: ... SURFACE FINISH 63 7	
										REVISIONS	
										REVISIONS	
SYM	DESCRIPTION	DATE	APP	SYM	DESCRIPTION	DATE	APP	SYM	DESCRIPTION	DATE	APP
B	HEIGHT FOR BOTH SPEED PICKUPS WAS 3/4, NO EN	10/4/2006	AJCSB								
A	2 11/16 ± 1/8 (± TO END OF CONDUIT BOSS & 2 11/16 ± 1/8 (± TO END OF CONDUIT PORT)) WERE 2 1/8 ± 1/8 (± TO END OF CONDUIT PORT) WERE 2 1/8 ± 1/8 (± TO END OF CONDUIT PORT) WERE 2 1/8 ± 1/8 (± TO END OF CONDUIT PORT) WERE 2 1/8 ± 1/8 (± TO END OF CONDUIT PORT)	10/17/97	AJCSB								