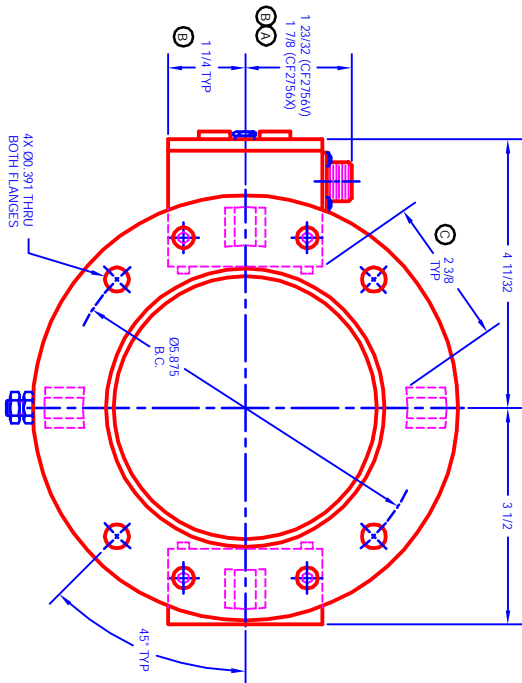
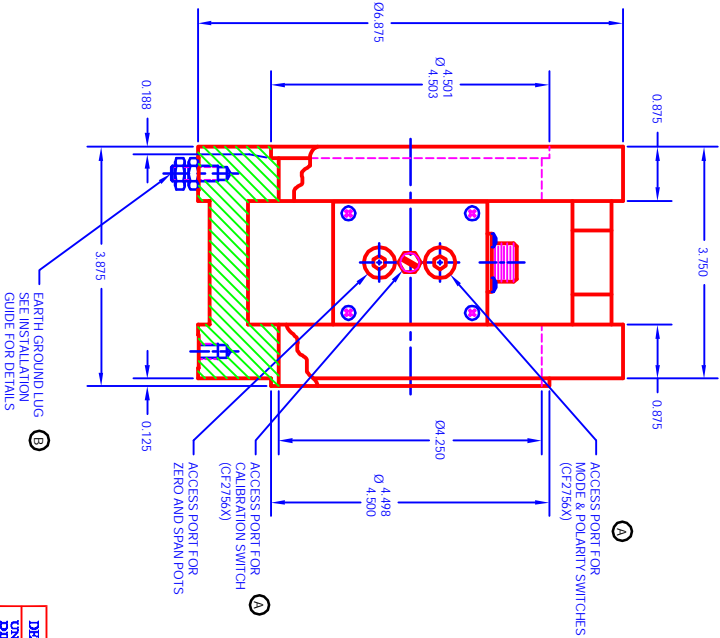
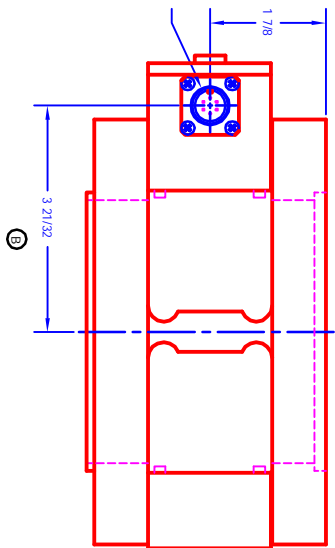


FOR INFORMATION AND GOVERNANCE ONLY. THIS DRAWING IS THE PROPERTY OF S. HIMMELSTEIN & COMPANY. IT IS TO BE USED ONLY FOR THE PROJECT AND SITE SPECIFICALLY IDENTIFIED HEREIN. ANY REUSE OR MODIFICATION OF THIS DRAWING WITHOUT THE WRITTEN CONSENT OF S. HIMMELSTEIN & COMPANY IS PROHIBITED.

- CONNECTOR PIN FUNCTIONS**
- CFZ756V
 A → + POWER IN
 B → - POWER IN
 C → N/C
 D → - SIGNAL
 E → + SIGNAL
 F → CAL ENABLE
- CFZ756X
 A → + (LOOP SUPPLY)
 B → - (LOOP RETURN)

TORQUE SIGNAL CONNECTOR
 PCD2A-10-6P FOR CFZ756V
 MS3102A-10SL-4P FOR CFZ756X
 MATING CONNECTOR SUPPLIED



EARTH GROUND LUG
 SEE INSTALLATION
 GUIDE FOR DETAILS

DEBURR & BREAK SHARP EDGES	ORIGINAL DATE	DATE	REVISION
UNLESS OTHERWISE SPECIFIED DIMENSIONS ARE IN INCHES FRACTIONS > 1/16 ARE IN 1/32	DESIGNED BY Gerrit Balitz	DATE 05/12/03	REVISION 1
ALL DIMENSIONS UNLESS OTHERWISE NOTED	APPROVED BY Gerrit Balitz	DATE 05/12/03	REVISION 1

**OUTLINE
 CFZ756
 TORQUEMETER**

S. HIMMELSTEIN & Co.
 224-7952
 SCALE: FULL SHEET 1 OF 1
 REV

SYM	DESCRIPTION	DATE	APP
A	ADDED PIN FUNCTIONS, TORQUE CONNECTOR TYPE, X ACCESS PORTS, X CONNECTOR HEIGHT & X CONNECTOR HEIGHT DIFFERENTIATION	07/02/03	984
B	ADDED EARTH GROUND LUG, 1 1/4, 1 7/8, 1 23/32, 3 21/32 WERE 1 3/16, 1 13/16, 1 21/32, 3 11/16, ECN 589	11/08/04	984
C	ADDED 2.38 TYP	10/22/03	1A03