

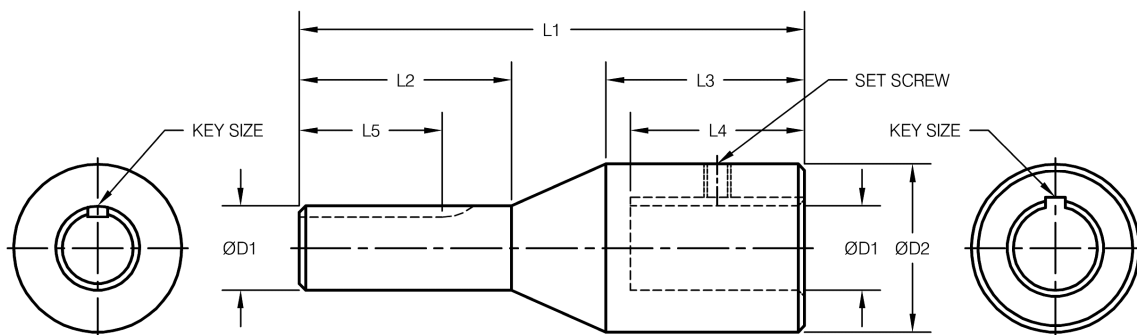
CF2700 OPTIONAL COUPLING SHAFTS

DESCRIPTION, DIMENSIONS, RATINGS, PART NUMBERS AND PRICE LIST

DESCRIPTION

These *stainless steel* coupling shafts mate a motor shaft to a female load shaft. They are intended for use at typical motor speeds; 3,000 rpm or less. If the load shaft is a male, use a conventional double-flex coupling. Dimensions and tolerances meet NEMA standards for diameters and keyways. Models are available for shaft diameters from 0.625 inches through 1.875 inches. The user should provide shaft keys. We recommend use of an anti-seizing compound when making up your installation.

OUTLINE DIMENSIONS, inches



MODEL	PART NUMBER	ØD1	ØD2	KEY	L1	L2	L3	L4	L5	SET SCREW
CF2756 X Ø0.625	224-7946	0.625	1.250	0.188 SQ	5 7/16	1.875	1.938	1.688	1.375	1/4-20
CF2756 X Ø0.875	224-7947	0.875	1.750	0.188 SQ	5 7/16	2.250	1.938	1.688	1.375	1/4-20
CF2782 X Ø1.125	224-7948	1.125	2.250	0.250 SQ	7 3/4	2.750	2.750	2.125	1.750	5/16-18
CF2782 X Ø1.375	224-7949	1.375	2.750	0.313 SQ	8 3/16	3.375	2.938	2.563	2.125	3/8-16
CF2782 X Ø1.625	224-7950	1.625	3.250	0.375 SQ	9 1/16	4.000	3.813	3.438	2.875	3/8-16
CF2784 X Ø1.875	224-7951	1.875	3.750	0.500 SQ	10 5/16	4.625	4.375	4.000	3.250	1/2-13

TORQUE RATINGS AND PRICING

MODEL NUMBER	PART NUMBER	MAXIMUM TORQUE RATING	UNIT PRICE
C2756XØ0.625	224-7946	240 LB-IN	\$75.00
C2756XØ0.875	224-7947	340 LB-IN	\$100.00
C2782XØ1.125	224-7948	740 LB-IN	\$225.00
C2782XØ1.375	224-7949	1,370 LB-IN	\$375.00
C2782XØ1.625	224-7950	2,630 LB-IN	\$575.00
C2784XØ1.875	224-7951	4,570 LB-IN	\$900.00

S. HIMMELSTEIN AND COMPANY

2490 Pembroke Ave., Hoffman Estates, IL 60195 USA • Tel: 847/843-3300 • Fax: 847/843-8488